

Army Units

The majority of the Army troops participating in Portrex will come from the 3rd Infantry Division, plus a Battalion Combat Team of the 82nd Airborne Division, and the 65th Infantry Regiment.

The 3rd Infantry Division, and supporting elements and a Battalion Combat Team of the 82nd Airborne Division, will participate in the airborne and amphibious assault on Vieques.

The 65th Infantry and supporting elements, including a special Aggressor cadre, will provide the Army troops for the defense of Vieques.

Army units participating in the exercise are:

INVASION FORCE

FROM FORT BENNING, GEORGIA

3rd Infantry Division (less one Regimental Combat Team)
78th Engineer Combat Battalion (less one Company)
3rd Counter Intelligence Corps Detachment
651st Medical Ambulance Company (Separate) (less two platoons)
537th Quartermaster Laundry Company (semi-mobile) (less two platoons)
Two sections QM 20th Subsistence Supply Company
106th Finance Disbursing Section

FROM FORT DEVENS, MASSACHUSETTS

7th Infantry Regimental Combat Team (less 1 Battalion Combat Team)
14th Ordnance Medium Maintenance Company

FROM FORT BRAGG, NORTH CAROLINA

2nd BCT, 504th Abn Inf, 82nd Airborne Division
526th Military Intelligence Service Platoon
528th Military Intelligence Service Platoon
205th Counter Intelligence Corps Detachment
Ordnance Light Aircraft Field Maintenance Detachment
171st Evacuation Hospital (Semi-mobile)
618th Medical Clearing Company (Separate) (less two platoons)
1 Section 531st Quartermaster Petroleum Supply Company
580th Quartermaster Service Company
1 Platoon 108th Quartermaster Baker Company (Mobile)
Signal Company (Composite) 4th Signal Battalion
Detachment 4th Signal Battalion (For Headquarters Ship)
Detachment 20th Signal Air Ground Liaison Company
Detachment 181st Signal Depot Company (Radio Repair Section)
Detachment 28th Military Government Company
Military Police Platoon V Corps

FROM FORT WORDEN, WASHINGTON

2nd Engineer Special Brigade (less Boat Elements)
1 Composite Company, 56th Amphibious Tank and Tractor Battalion

ARMY UNITS (Continued)
 FROM FORT HAMILTON, NEW YORK
 Det, 7th Medium Port (Transportation)
 FROM FORT EUSTIS, VIRGINIA
 Headquarters and Headquarters Detachment, 11th Transportation
 Port Battalion (Composite)
 116th Transportation Port Company
 117th Transportation Port Company
 458th Transportation Amphibious Truck Company
 FROM VINT HILL FARMS, VIRGINIA
 Detachment, Army Security Agency
 FROM CAMP LEE, VIRGINIA
 Headquarters and Headquarters Detachment 501st Quartermaster
 Battalion (less Medical Detachment)
 592nd Quartermaster Refrigeration Truck Detachment
 FROM FORT KNOX, KENTUCKY
 1 Platoon (Augmented) 65th Ordnance Ammunition Company
 17th Ordnance Bomb Disposal Squad
 FROM CAMP CAMPBELL, KENTUCKY
 58th Quartermaster Salvage Collection Company (less two platoons)
 FROM FORT GEORGE MEADE, MARYLAND
 Detachment 167th Signal Photo Company
 311th Army Postal Unit, Type F
 FROM ARMY CHEMICAL CENTER, MARYLAND
 69th Chemical Smoke Generator Company
 Company A 2nd Chemical Mortar Battalion
 95th Chemical Service Company
 DEFENSE FORCE
 FROM CARIBBEAN COMMAND
 Headquarters and Headquarters Company, Task Force
 65th Infantry
 504th Field Artillery Battalion
 531st Engineer Combat Company (less one platoon)
 98th Anti-aircraft Artillery Gun Battalion
 37th Transport Truck Company
 81st Army Band
 Service Supply Company (Provisional)
 4.2" Mortar Platoon
 1st Infantry Battalion
 FROM FORT BRAGG, N.C.
 514th Medical Clearing Co. (less two clearing platoons)
 One Unit 64th Field Hospital
 FROM FORT MONMOUTH, N.C.
 9466th Technical Service Unit (port)
 FROM FORT RILEY, KANSAS
 Detachment, General Headquarters, Aggressor
 Detachment Battalion Headquarters 47th Army Engineer
 Camouflage Battalion
 Company A 47th Army Engineer Camouflage Battalion
 Signal Company Special, 23rd Headquarters Special Troops
 Tactical Information Detachment, 5021st Army Service Unit
 520th Military Intelligence Service Platoon
 FROM FORT GEORGE MEADE, MARYLAND
 Detachment Company B, 51st Signal Operations Battalion
 Detachment 167th Signal Photo Company
 FROM CAMP HOLABIRD, MARYLAND
 Detachment 316th Counter Intelligence Corps Center



"HITTING THE BEACH" UNDER NORMAL CONDITIONS

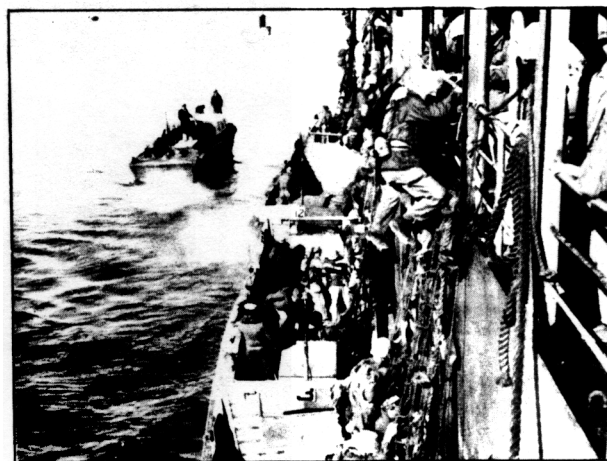
Invasions



.....BUT SOMETIMES "G-I JOE" HAS TO GET OUT INTO DEEP WATER



AphTrk COMING ASHORE



LOADING INTO ASSAULT CRAFT